



**昌源隆纺机**  
CHANGYUANLONG FANGJI

青岛昌源隆纺织机械有限公司  
Qingdao Changyuanlong Textile Machinery Co., Ltd.  
地址：青岛市黄岛区王台镇工业园  
电话：0532-83131888  
邮箱：cn\_changyuanlong@126.com



>> 青岛昌源隆纺织机械有限公司  
QINGDAO CHANGYUANLONG TEXTILE MACHINERY CO., LTD  
>> 专业无纺设备制造  
PROFESSIONAL NON-WEAVE EQUIPMENT MANUFACTURE

## COMPANY 昌源隆简介

### >> INTRODUCTION

青岛昌源隆纺织机械有限公司位于纺织机械名镇——青岛开发区王台工业园，专业生产制造各类无纺布设备，具有悠久的自主开发能力和生产无纺机械的历史经验，拥有现代精良的加工生产设备、检验技术和先进的工艺。

公司产品定位于中高档产品，可替代进口。在业内人士的支持下，我们已先后推出了开包、开松、给棉、梳理、铺网、针刺、烘房、烫光 and 切边成卷等设备。凭借我们雄厚的研发能力、成功的管理经验、完善的质量保证体系、以及在无纺技术上不断的完善和提高。已先后为国内外企业提供了高性能的成套设备。主要包括：无胶棉生产线、喷胶棉生产线、仿丝棉生产线、碳纤维毡生产线、玻璃纤维毡生产线、汽车内饰生产线、一次性展览地毯生产线等。

公司秉承“精益求精，以诚信赢天下的经营理念”，坚持“顾客至上”的基本原则，为广大客户提供优质服务，建立了一支成熟稳定的售后服务团队，为公司赢得了良好的信誉，产品远销埃及、越南、韩国、印度、孟加拉、科索沃等国家，受到用户的一致好评！

昌源隆纺机全体员工欢迎各界友人到公司参观、交流、指导工作。

Qingdao Changyuanlong Textile Machinery Co., Ltd. is located in famous textile machinery town, namely, Wangtai industrial park of Qingdao economic zone. It is specialized in various non-woven fabrics equipment. It has strong ability of research and development, rich experience and history of non-woven machinery manufacturing, as well as modern & excellent fabrication plant, inspection technology and superior techs.

At present, our main product positioning in middle and high product, which can be replace of imported. With the support of people in the industry, we have developed equipments such as bale opener, opener, feeder, carding machine, cross lapper, needle punching machine, the oven machine, calendar, cutting & winding. With our strong research and development capabilities, successful management experience, perfect quality assurance system, and continuous improvement and improvement in technology, Has provided domestic and foreign enterprises with high-performance complete sets of equipment, mainly including non-glue wadding production line, spray-glue wadding production line; imitation silk cotton production line; carbon fiber felt production line, glass fiber felt production line, automotive interior production line, one-time exhibition carpet production line and so on.

Adhering to the operating concept of "keeping improving to achieve success with integrity", and sticking to the basic principle of "customer first", the company provides high-quality and satisfied services for vast customers, builds a mature and stable after-sales service team, winning good reputation for the company. Products are exported to Egypt, Vietnam, South Korea, India, Bangladesh, Kosovo and other countries, and unanimously praised by users.

Welcomes all friends at home and abroad to visit our company, with good cooperation.





## CHOOSE FOR US REASONS

### 选择我们的理由

#### 专注无纺设备研发制造

悠久的自主开发能力和生产无纺机械的历史经验。拥有  
现代精良的加工生产设备、检验技术和先进的工艺。



## 目录 CONTENTS

公司简介 COMPANY INTRODUCTION	01/02
开松混棉部分 OPENING&BLENDING	05/10
梳理成网部分 CARDING&WEB FORMATION	11/17
针刺部分 NEEDLE PUNCHING	18/18
后处理设备 FINISHING PART	19/23
辅助设备 AUXILIARY EQUIPMENT	24/24
生产线流程图 PRODUCTION LINE FLOW CHART	25/26

## 开包机

### BALE OPENER



#### 应用范围

开松各种捆包纤维，由电子秤量进行配比，按程序控制，将纤维均匀平铺在混棉台上。

#### 技术规格

机幅: 1200mm 1400mm 1600mm  
产量:  $\leq 250\text{kg/h}$   $\leq 350\text{kg/h}$   $\leq 500\text{kg/h}$   
功率: 3kw 3.5kw 3.75kw

#### Application

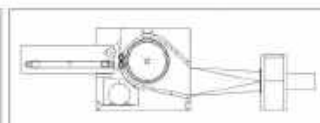
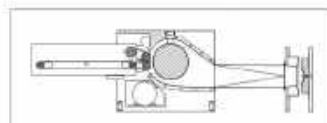
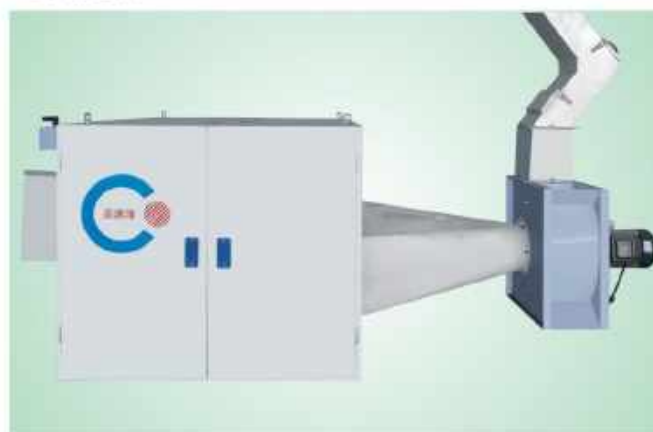
Opening the bales, dosing and weighing of the distributed fibers by electronic weighing system. Discharge the fibers onto blending conveyor evenly.

#### Technica Data

Machine width: 1200mm 1400mm 1600mm  
Capacity:  $\leq 250\text{kg/h}$   $\leq 350\text{kg/h}$   $\leq 500\text{kg/h}$   
Power: 3kw 3.5kw 3.75kw

## 开松机

### OPENER



#### 应用范围

对纤维进行开松，并经风机输送至下道工序。

#### 技术规格

机幅: 1000mm 1300mm 1500mm  
产量: 300kg/h 400kg/h 500kg/h  
功率: 7kw 8.5kw 11kw

#### Application

Opening the fibers then feed to next process by fan.

#### Technica Data

Machine width: 1000mm 1300mm 1500mm  
Capacity: 300kg/h 400kg/h 500kg/h  
Power: 7kw 8.5kw 11kw

## 大仓混棉箱

### BIG CABIN BLENDER



#### 应用范围

对各种经过初步开松纤维进行充分的混合及存储，达到连续生产的作用。

#### 技术规格

容积：20m<sup>3</sup> 30m<sup>3</sup> 40m<sup>3</sup>

功率：10.7kw

#### 结构特征

采用旋转分离装置，使纤维能均匀分布在大仓内；储棉仓采用镀锌板数控加工，内壁光滑；打手采用角钉结构。

#### Application

Mix the opened fiber and make sure the continuous production.

#### Technica Data

Capacity: 20m<sup>3</sup> 30m<sup>3</sup> 40m<sup>3</sup>

Power: 10.7kw

#### Mechanical characters

By rotary separator to keep the fiber scatter evenly in the cabin. Interior is galvanized sheet by numerical controlling machining and smooth. Beater is spiked structure.

## 振动给棉机

### VIBRATION FEEDER



#### 应用范围

将开松混合后的纤维形成均匀蓝棉，连续输送至下道工序。

#### 技术规格

机幅：1670mm 1850mm

2000mm 2300mm

产量：30~400kg/h

功率：3.3~4.4kw

#### 结构特征

可调式容积仓，定量振动落棉输出；打手采用角钉结构，两端防缠棉。

#### Application

Form the opened and blended fiber to the even batt then feed to the next process.

#### Technica Data

Machine width: 1670mm 1850mm

2000mm 2300mm

Capacity: 30~400kg/h

Power: 3.3~4.4kw

#### Mechanical characters

Adjustable volume storehouse, quantitative vibration of cotton output. This beater uses the angle nail structure, and the two ends prevent the cotton from wrapping.

## 气压棉箱

### AIR PRESSURE FEEDER



#### 应用范围

本机采用上下棉箱结构，根据气压作用控制贮棉量，确保输出均匀的棉层供下道工序。

#### 技术规格

机幅：1600mm 1800mm 2000mm 2200mm  
产量：30~100kg/h  
功率：3.5kw

#### 结构特征

本机采用上下棉箱结构，变频控制内置风机；高精度上下棉箱压力检测；气压式棉箱调节机构；自调匀整器与变频罗拉，形成均匀纤维。

#### Application

up&down cotton cabinets structure, Control storing cotton by pneumatic to ensure even mesh to next procedure.

#### Technica Data

Machine width: 1600mm 1800mm 2000mm 2200mm  
Capacity: 30~100kg/h  
Power: 3.5kw

#### Mechanical characters

It adopts upper and down box structure and controlling inside blower by inverter. Check upper and down box pressure high accurately and pneumatic horizontal adjustment structure auto leveling signal control outputting roller to get even mat.

## 储棉箱

### RESERVE BOX



#### 应用范围

将送料风机送的料均匀混合在一起输送给开松机或棉箱。本机是储棉供棉设备，能提高喂棉的均匀度。

#### 技术规格

机幅：1000mm 1400mm 1600mm 2000mm  
产量：≤500kg/h

#### Application

Feed the material led from the feed fan evenly and send it to the opener or the feeder. This machine is a storing and suppling equipment, can improve the leading uniformity.

#### Technica Data

Machine width: 1000mm 1400mm 1600mm 2000mm  
Capacity: ≤500kg/h



## 单锡林双道夫-梳理机

### SINGLE CYLINDER & DOUBLE DOFFER -CARDING MACHINE



#### 应用范围

适用于将棉道经过处理由数端进行充分梳理后输出  
均匀的网棉送下道工序。

#### 技术规格

机座：1550mm 1850mm 2000mm 2300mm  
2500mm

出网速度：≤45m/min

功率：21.5kw~28kw

#### 结构特征

进料带有金属保护装置；  
不锈钢隔花，防护罩气动升降；  
工作辊，刺毛辊采用双排轴承结构，轴套连接轴头  
与轴承，保护轴头不磨损；  
集尘的吸边装置，飞花回收至除尘袋，保持环境卫生。

#### Application

Card the processed even ball completely and output even  
webbing and then feed to the next process.

#### Technica Data

Machine width：1550mm 1850mm 2000mm 2300mm  
2500mm

Output speed：≤45m/min

Power：21.5kw~28kw

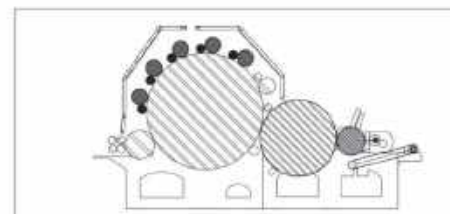
#### Mechanical characters

Feeding is equipped with metal proof device, stainless steel  
under screen and pneumatic lifting safety shield. Working roller  
and stripping roller adopt double row bearing structure. Shaft  
sleeve links shaft nose and bearing to keep shaft nose from  
wearing. Patented suction device recycle the flying fiber to dust  
bag to keep clean.

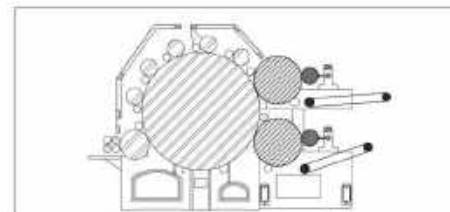
## 结构选择

### STRUCTURE SELECTION

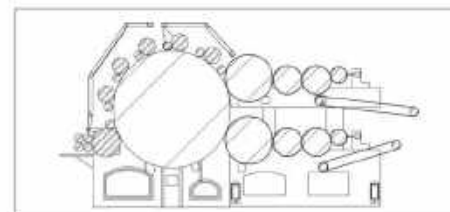
单锡林单道夫梳理机  
SINGLE CYLINDER SINGLE DOFFER  
CARDING MACHINE



单锡林双道夫梳理机  
SINGLE CYLINDER DOUBLE DOFFER  
CARDING MACHINE



单锡林双道夫双朵互梳理机  
SINGLE CYLINDER DOUBLE DOFFER  
DOUBLE CUTTER CARDING MACHINE



## I型双锡林梳理机

### DOUBE CYLINDER CARDING MACHINE



#### 应用范围

适用于将前道经过处理的熟棉进行两遍梳理后输出均匀纤维输送给下道工序。

#### 技术规格

机幅：1550mm 1850mm 2000mm 2300mm 2500mm

出网速度：≤45m/min

功率：21.5kw~29.7kw

主锡林直径：1230mm

#### 结构特征

双锡林梳理，棉网均匀；进料带有安全保护装置；不锈钢筛网，防护罩气动升降；工作辊，剥毛辊采用双轴承，轴承连接轴头与轴承，保护轴头不磨损；独有的吸边装置，飞花回收至除尘器，保持环境卫生。

#### Application

Card the processed even batt twice and output even webbing and then feed to the next process.

#### Technica Data

Machine width: 1550mm 1850mm 2000mm 2300mm 2500mm

Output speed: ≤45m/min

Power: 21.5kw~29.7kw

Main cylinder diameter: 1230mm

#### Mechanical characters

Double cylinder carding and even mat. Feeding is equipped with a metal proof device, stainless steel under screen and pneumatic lifting safety shield. Working roller and stripping roller adopt double row bearing structure. Shaft sleeve links shaft nose and bearing to keep shaft nose from wearing. Patented suction device recycle the flying fiber to dust bag to keep clean.

## II型双锡林梳理机

### DOUBE CYLINDER CARDING MACHINE



#### 应用范围

适用于将前道经过处理的熟棉进行两遍梳理后输出均匀纤维输送给下道工序。

#### 技术规格

机幅：2000mm 2300mm 2500mm

出网速度：≤60m/min

功率：35kw~60kw

主锡林直径：1300mm

#### 结构特征

双锡林梳理，棉网均匀；进料带有安全保护装置；不锈钢筛网，防护罩气动升降；独有的吸边装置，飞花回收至除尘器，保持环境卫生。

#### Application

Card the processed even batt twice and output even webbing and then feed to the next process.

#### Technica Data

Machine width: 2000mm 2300mm 2500mm

Output speed: ≤60m/min

Power: 35kw~60kw

Main cylinder diameter: 1300mm

#### Mechanical characters

Double cylinder carding and even mat. Feeding is equipped with a metal proof device, stainless steel under screen and pneumatic lifting safety shield. Patented suction device recycle the flying fiber to dust bag to keep clean.



## III型双锡林梳理机

### DOUBLE CYLINDER CARDING MACHINE



#### 应用范围

适用于将前道经过开松的纤维进行两道梳理后输出均匀纤维输送给下道工序。

#### 技术规格

机幅：2500mm 3000mm  
出网速度：≤90m/min  
功率：35kw-65kw  
主锡林直径：1500mm

#### 结构特征

高精度制成滚筒锡林高速梳理，精网均与不锈钢筛网底防护罩气功升降。

#### Application

Card the processed open balt twice and output even webbing and then feed to the next process.

#### Technica Data

Machine width：2500mm 3000mm  
Output speed：≤90m/min  
Power：35kw-65kw  
Main cylinder diameter：1500mm

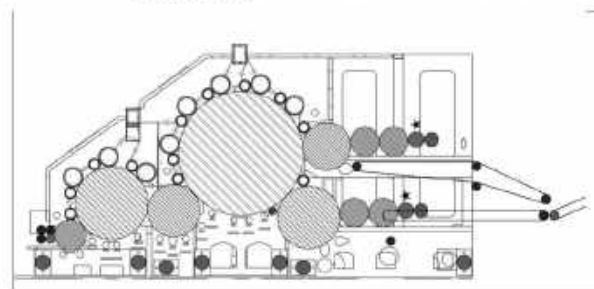
#### Mechanical characters

High-precision steel roller. Double cylinder carding and even mat. stainless steel under screen and pneumatic lifting safety shield.

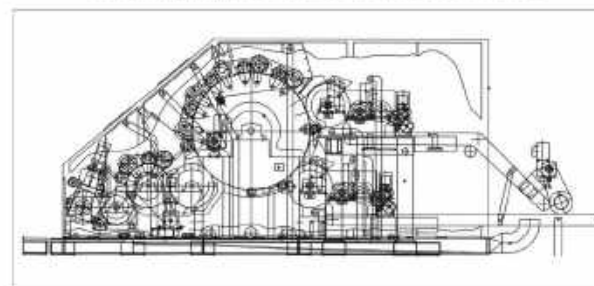
## 结构选择

### STRUCTURE SELECTION

Φ1500 型双锡林梳理机 DOUBLE CYLINDER CARDING MACHINE

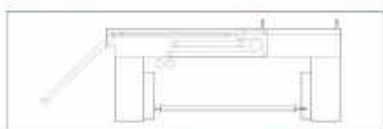


Φ1500 型双锡林梳理机 DOUBLE CYLINDER CARDING MACHINE



## 交叉铺网机

### CROSS LAPPER



#### 应用范围

将梳理后的纤网均匀折叠铺设成型后输送至下道工序。适用于针刺、水刺、热压等非织造布生产。

#### 技术规格

输入帘宽：1700mm~2700mm  
输出帘宽：2000mm~7200mm  
铺网速度：≤45m/min  
功率：6.7kw~15.9kw

#### 结构特征

新型折板机架，稳定性强；  
防静电PVC帘输入；  
往复式同步带传动。

#### Application

Cross lapping the web after carding, then feed to the next process. Suitable for needle punching, spunlacing, thermal-bonding production.

#### Technica Data

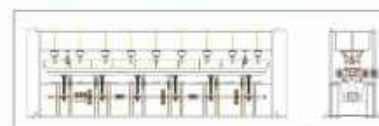
Input apron width: 1700mm~2700mm  
Output apron width: 2000mm~7200mm  
Spreading speed: ≤45m/min  
Power: 6.7kw~15.9kw

#### Mechanical characters

The new type of folding plate frame has strong stability. Anti-static PVC curtain input. Synchronous belt drive is used in reciprocating.

## 针刺机

### NEEDLE PUNCHING MACHINE



#### 应用范围

适合一般非织造布生产，如针刺棉、过滤基布、土工布等，分为预刺、上刺、下刺三种结构型式。

#### 技术规格

机幅：2000~7200mm  
植针密度：3000~6000枚/米  
针刺行程：30~60mm  
针刺频率：≤700次/分

#### 结构特征

框架式结构，稳定性强；  
镁合金针板复合PU气囊恒紧定位；  
高强度U型剥离网板；  
自动喷油，定时润滑。

#### Application

Suitable for production of common nonwovens such as needle punched nonwovens, asphalt felt substrate, geotextile, etc. Three kinds of structural style for this machine are pm-needling, upstroke and downstroke.

#### Technica Data

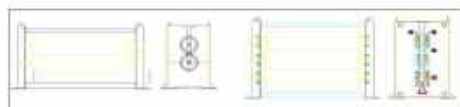
Machine width: 2000~7200mm  
Needle density: 3000~6000n/m  
needle stroke: 30~60mm  
needle frequency: ≤700s/min

#### Mechanical characters

Framework structure to keep stability;  
Magnesium alloy needle plate with PU and air bag lock;  
High strength U type stripping plate;  
Automatic oil spraying and lubricate at regular time.

## 烫光机

### CALENDER MACHINE



#### 应用范围

用于非织造布产品表面处理，并能达到所要求的表面效果与厚度。

#### 技术规格

机幅：1800~3800mm  
烘面温度：≤220℃  
生产速度：≤15m/min  
结构形式：二辊、三辊

#### 结构特征

不锈钢加热辊，表面特氟龙处理；  
双辊间距可调；  
安全停车开关。

#### Application

Apply for surface treatment of nonwoven fabric production.

#### Technica Data

Machine width : 1800~3800mm  
Surface temp : ≤220℃  
Working speed : ≤15m/min  
Type: two rollers or three rollers

#### Mechanical characters

Stainless steel heating roller with surface Teflon coated Roller  
gap adjustable safety stop switch

## 喷胶棉烘房

### SPRAY-BONDED WADDINGS DRYING MACHINE



#### 应用范围

适合生产高弹胶肢棉、无胶棉。该产品广泛应用于服装、床上用品、家具等。

#### 技术规格

机幅：2600~4100mm  
箱体长度：8000mm 10000mm 12000mm  
加热方式：导热油循环 直燃式  
生产速度：≤15m/min

#### 结构特征

三层烘燥工作区，热风循环穿透对流；  
双屏不锈钢夹斗，夹斗接触处不接触纤维；  
轨道采用耐磨不锈钢材料；  
优良的保温系统，减少能源消耗。

#### Application

For the production of high-elasticity spray-bonded waddings and glue-free waddings. The products are widely used in garments, bedding and furnitures, etc.

#### Technica Data

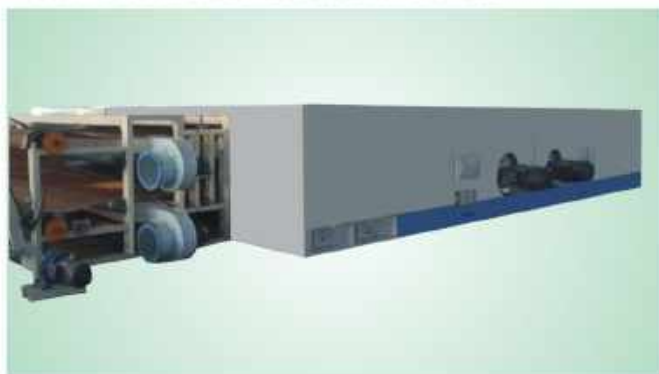
Machine width : 2600~4100mm  
Chamber length : 8000mm 10000mm 12000mm  
Heating method : Circulated hot oil direct burning  
Workign speed : ≤15m/min

#### Mechanical characters

3 pass drying area and hot air circulation;  
Double layer stainless steel hopper;  
The track is by abrasion resistant stainless steel;  
Supreme insulation system to save energy.

## 硬质棉烘干机

### STIFF WADDINGS DRYING MACHINE



#### 应用范围

适合生产硬质棉。该产品广泛用于床上用品、装饰家具、沙发海绵填充料等。

#### 技术规格

机幅：2500~3800mm  
箱体长度：8000mm 10000mm 12000mm  
加热方式：导热油循环 直燃式  
生产速度：≤15m/min

#### 结构特征

双层链板夹式，表面镀锌层，上链单独升降；  
对装两台高压循环风机，热风循环对流；  
优良的保温系统，减少能源损耗。

#### Application

For the production of stiff waddings. The products are widely used in bedding, furniture, high-quality mattress.

#### Technica Data

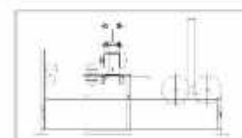
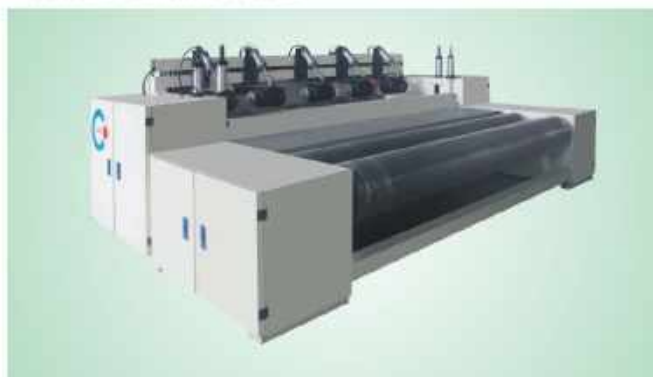
Machine width: 2500~3800mm  
Chamber length: 8000mm 10000mm 12000mm  
Heating method: Circulated hot oil direct burning  
Working speed: ≤15m/min

#### Mechanical characters

The double-layer chain plate is clamped and coated with Teflon. To install two high pressure circulation hot fans, hot air circulates through convection. Excellent insulation system to reduce energy consumption.

## 成卷机

### WINDING MACHINE



#### 应用范围

适合非织造布生产线后道剪切、计数、成卷。

#### 技术规格

机幅：2000~7200mm  
生产速度：≤15m/min  
功率：1.5~4kw

#### 结构特征

摩擦式电子计数，准确可靠；  
收卷机为无缝钢管加工而成。

#### Application

Used for cutting, counting and rolling of nonwovens.

#### Technica Data

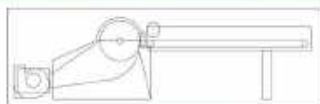
Machine width: 2000~7200mm  
Working speed: ≤15m/min  
Power: 1.5~4kw

#### Mechanical characters

Friction type electronic counter;  
Winding roller is by seamless steel pipe.

## 开边机

### OPENING MACHINE



#### 应用范围

适合非织造布边角料的开松及回收。

#### 技术规格

机宽：400mm 500mm 600mm 800mm  
产量：30-50kg/h  
功率：6~11kw

#### 结构特征

优质钢板弹簧板喂入；  
不锈钢筛座，出料由风机输送。

#### Application

Suitable for nonwovens the leftover material have the loose and recycling.

#### Technica Data

Machine width : 400mm 500mm 600mm 800mm  
Capacity : 30~50kg/h  
Power : 6~11kw

#### Mechanical characters

Feeding in by high quality piano spring board;  
stainless steel under screen and output fiber by blower.

## 辅助设备

### AUXILIARY EQUIPMENT



乔氏磁铁 Magenta



三通 Distributor



电器操作台 Control panel



输棉风机 Fan

## PRODUCTION FLOW CHART

无胶棉、无胶棉生产线 Non-glue waddings, Glue-free waddings production line



糖胶格、仿丝棉生产线 Spray-bonded waddings, imitation silk waddings production line



汽车内饰无纺布生产线 Automotive interior non-woven production line



土工布生产线 Geotextile fabric production line



合成革基布生产线 Synthetic leather base fabric production line

